

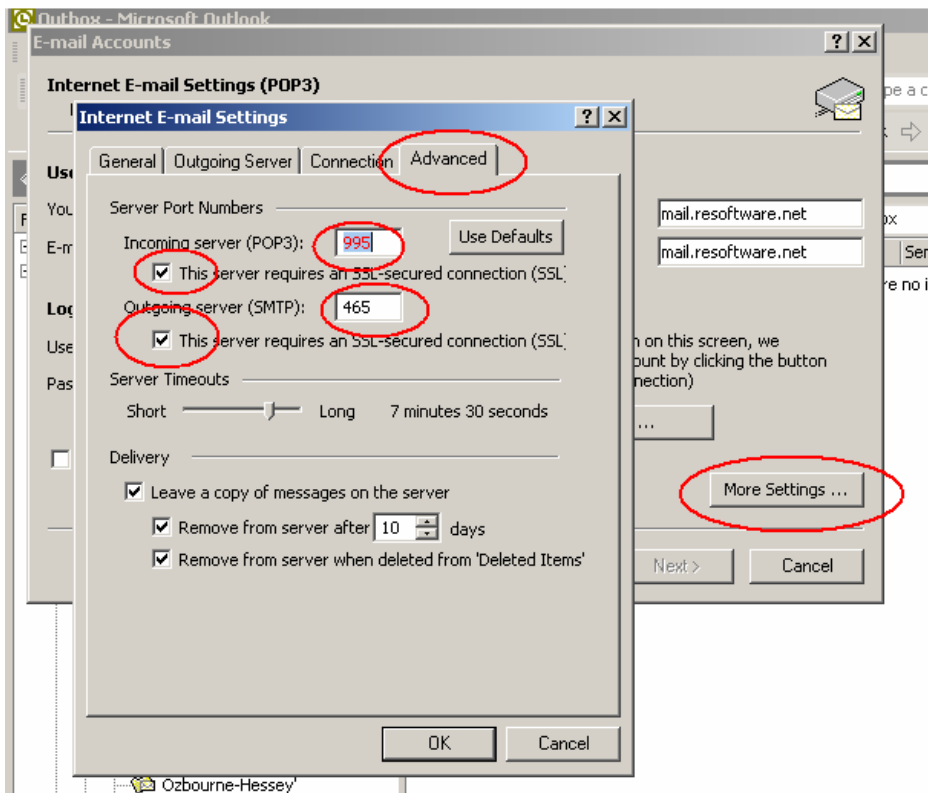
Mail Settings changes for new SSL

You must make changes to your mail software that will allow it to use our new SSL mail settings. These changes are going in to effect October 1, 2009. All mail packages have their own setup dialogs. Below is sample from Microsoft Outlook XP.

You must switch your mail settings to: *This Server Requires SSL-Secured Connection*

In addition to that, you must also make sure that the port settings are as follows:
POP3 port is 995
SMTP port is 465

See the Image below for an example of the new server settings. This sample is from Microsoft Outlook XP.



How To Install the SSI Trusted Certificate for E-Mail

These steps assume you have downloaded and un-zipped the resdcertificate.crt file to your local hard disk. Please be sure to know where that is located. Most users will place it in their My Documents folder under the Imail_SSL_key folder. For instructions on how to Un-Zip a file please download the How to Un-Zip Document on our web site or in the email we sent you. – *R & E Software Design LLC Support Staff*

INSTRUCTIONS

To install a trusted root certificate manually follow the steps below.

How to install a Trusted Root Certificate in Windows XP

1. Go to Start – Control Panel



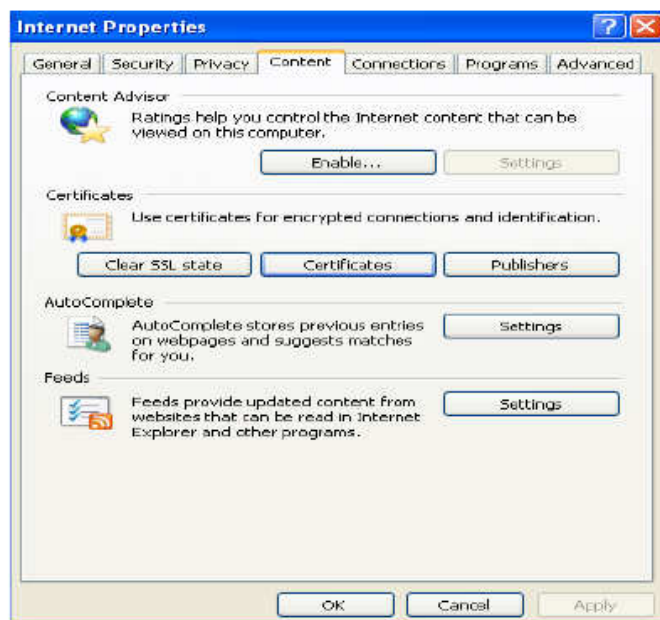
and click on

Internet Options



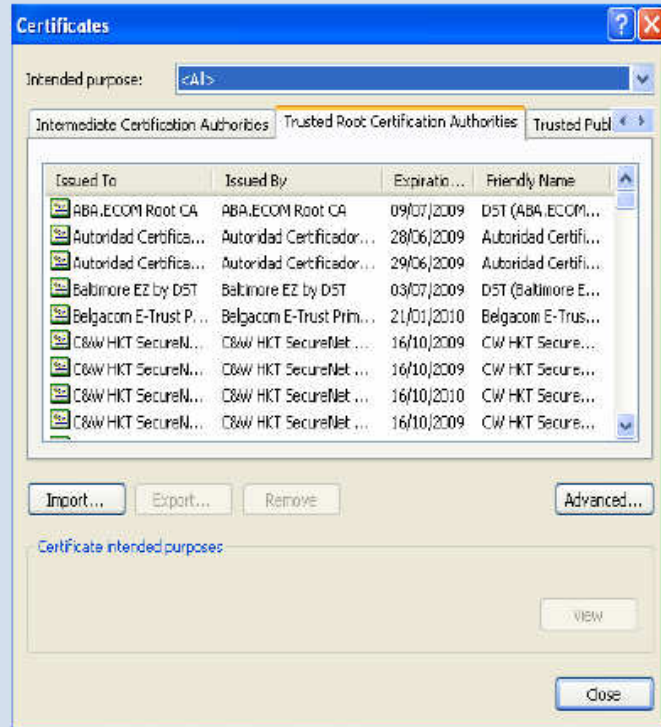
- 2 Click on the **Content** tab

Click **Certificates**



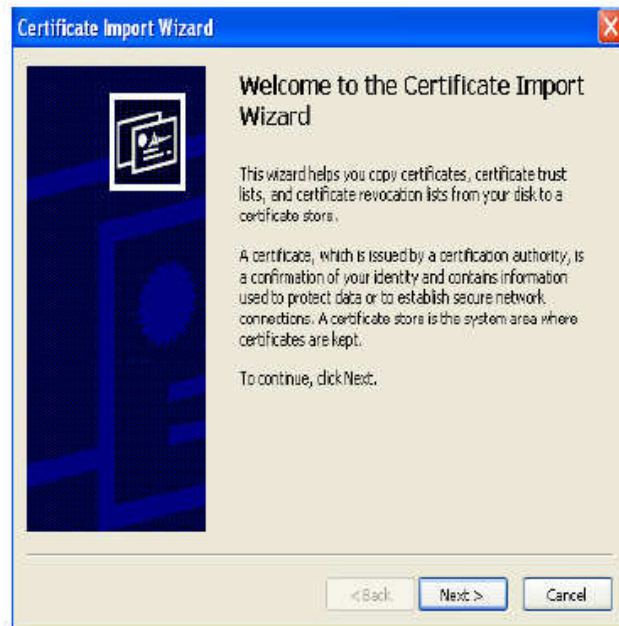
- 3 Select **Trusted Root Certification Authorities** to see a list of trusted certificates.

Press **IMPORT** to install The **RESD** Root Certificate.



- 4 The Certificate Import wizard appears

Click **Next** to get started



5 Click BROWSE to locate the RESD Trusted Root Certificate

The RESD certificate

resdcertificate.crt

was e-mailed to you in a zip file that you downloaded earlier along with this document.

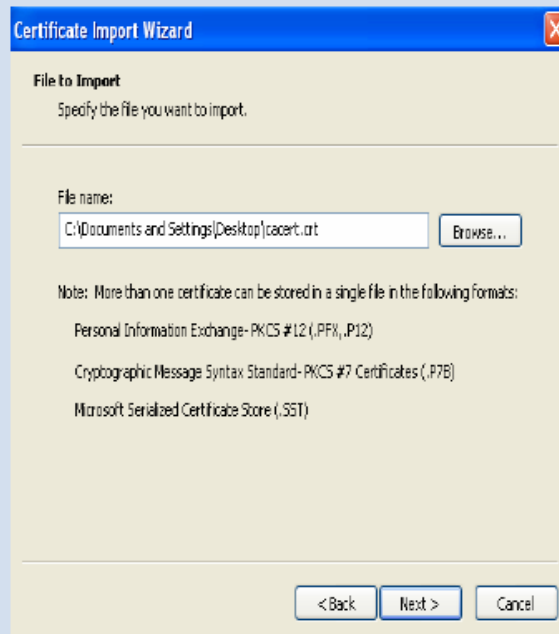
or Download at

[Http://www.resoftware.net](http://www.resoftware.net)

The file is at the bottom of the page and labeled

"Imlail SSL certificate"

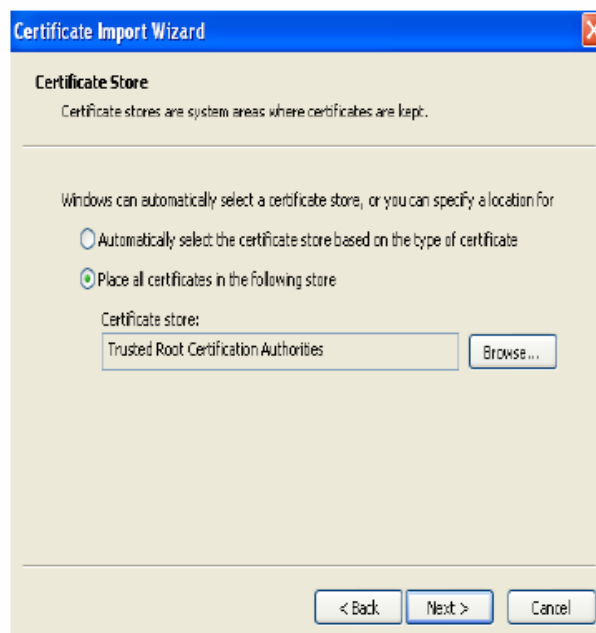
**** Note ** The instructions for unzipping the contents of the download are in the how to unzip instructions.**



Click **Next**

6 Make sure the

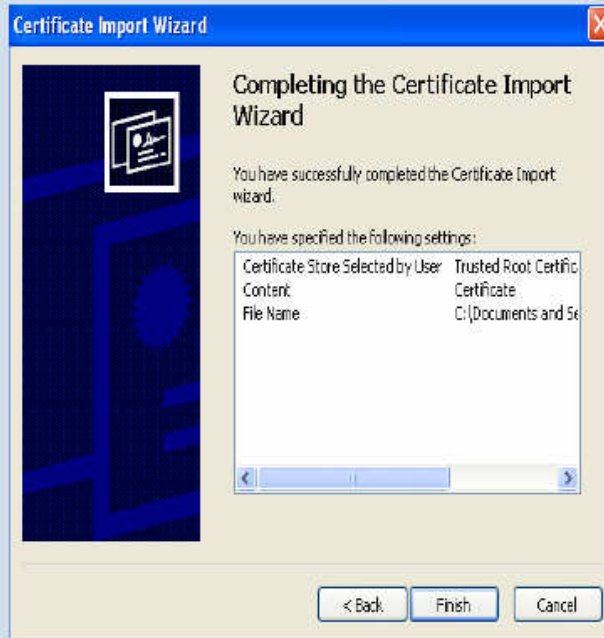
Place all certificates in the following store button is selected.



Click **Next**

7

Click **Finish** to exit the wizard



8

If the certificate installed successfully the following message box should appear.

