



**SOFTWARE  
DESIGN**

1620 S 7th Street Terre Haute, In 47802

**ACCUTECH**

Accurate Technology Provided by R & E Software Design llc

**812-235-4095**

# Release V4 Notification



**Copyright © 2009 FMS2010 (Version 4). All Rights Reserved.**

All rights reserved. This manual may not, in whole or part, be reproduced or transmitted, in any form or by any means, without prior consent, in writing, from FMS Global LLC.

The manual and software described in this manual are furnished under license and may only be used or copied in accordance with the terms of such license.

The information in this manual is furnished for informational use only, is subject to change without notice and should not be construed as a commitment by RESD LLC. RESD LLC assumes no responsibility or liability for any errors, omissions or inaccuracies.

Unless otherwise noted, all names of companies, products, street addresses, and persons contained herein are part of a completely fictitious scenario or scenarios and are used solely to document the use of FMS V4 Software.

IBM is a registered trademark of International Business Machines Corporation.

All other product names are copyright, trademarks or tradenames of their respective owners.

R & E Software Design llc / Accutech / FMS Global LLC  
1620 S 7<sup>th</sup> St  
Terre Haute, IN, USA 47802

Voice: (812) 235 4095  
Fax: (812) 238 9887  
Email: [fmssupport@resoftware.net](mailto:fmssupport@resoftware.net)

Website: [www.FMSGLOBAL.net](http://www.FMSGLOBAL.net)



## Table of Contents

<b>FMS Software Release V4.....</b>	<b>2</b>
Hardware & Software Requirements .....	2
User interface and usability enhancements by Module.....	2
Global System Wide.....	2
Graphical user interface (GUI).....	2
Advanced Programing Concepts .....	3
Enhanced Data Capabilites .....	3
Web Query & Data Definitions .....	3
Order Entry .....	4
Improved Sales History .....	4
Re-Runnable Dayclose Reports.....	4
Daily Balance Sheet Inquiry.....	4
Utiltran Interface .....	4
School Commodity Interface .....	4
Picking Module.....	4
Delivery Module .....	4
Web Order Entry.....	4
Inventory System .....	5
Lot Inventory/Locator System. ....	5
Improved Inventory History.....	5
Enhanced Barcode Support .....	5
G/L System.....	5
Improved History .....	5
Simplify Prior-Period Postings .....	5
Improved Inquiries.....	5
Purchasing System.....	6
Receiving Module .....	6
Contract Pricing.....	7
Bid Automation .....	7

## FMS Software Release V4

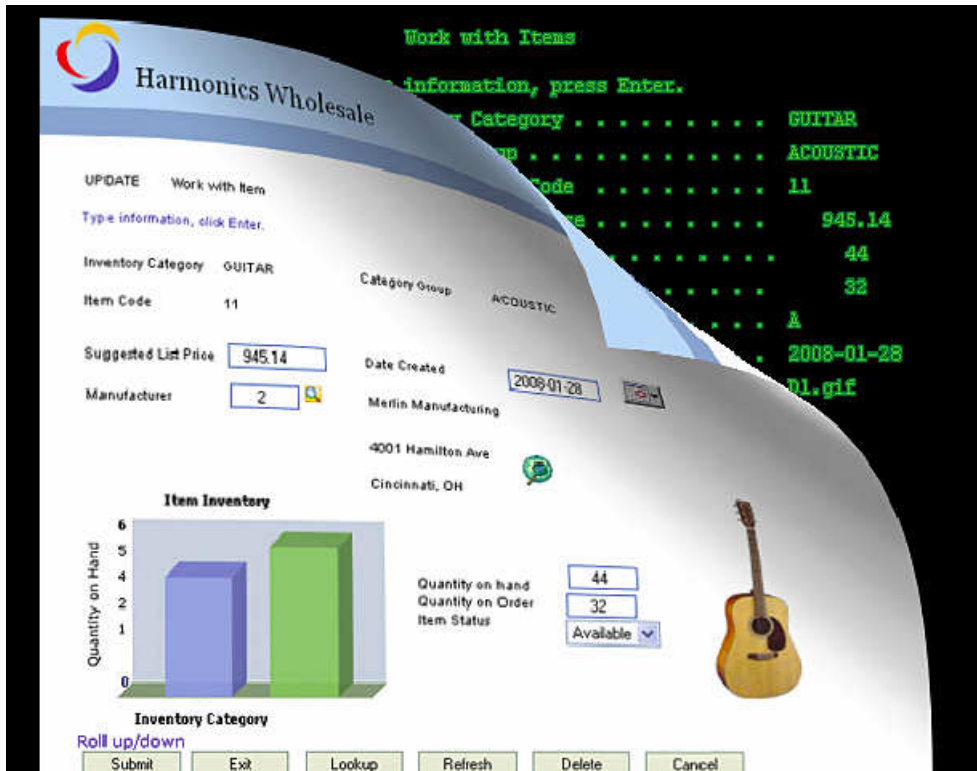
### Hardware & Software Requirements

FMS Release V4 is designed to run on the IBM Power6 and I-Series Hardware with the IBM I operating system V5r4 or later. It is recommended that the IBM Web Query for I-Series also be installed on the host system. RESD LLC as an IBM approved Business Partner can provide your company with a Hardware and System Software proposal or upgrade for your current System. The support staff can “remotely” login to your system and verify your current hardware and software levels to assist you in determining if your system will support then new release of FMS. This release of FMS will require more disk space than prior releases to fully implement and use the advanced features.

### User interface and usability enhancements by Module

#### *Global System Wide*

**Graphical user interface (GUI)** for pc clients attached to the Power6 Server. This will provide users with a look and feel of windows applications for the FMS Software. This will simplify training of new users and give the current users a more appealing and intuitive interface to run the FMS Software. The GUI implementation will retain the same functionality that our current software offers. All options and programs will be supported in this GUI version of the software. Additionally, as new HELP and functions are added, the GUI application will provide the user with additional functions and assistance not available to the “Green Screen” version of the application. As of this release, additional development of “Green Screen” functionality will cease and no longer be updated with new functions. See GUI sample screen below.



Sample From BCD Presto I/series GUI enablement Product

**Advanced Programming Concepts.** This is a major step towards increasing the performance and adaptability of the FMS Software. This will migrate all of the programs to the latest and most advanced ILE version of the program. This step facilitates faster program execution times and smaller programs. At the same time, it will allow for faster implementation of future modifications with less programming time. This will affect 90% of the current programs.

**Enhanced Data Capabilities.** This is a huge undertaking. The results will not be as noticed as other V4 modifications, but have far greater importance to the viability of the software for the future. This is the process of increasing the size and capacity of the internal files to accommodate larger values. For example a 10 digit invoice number, or prices that can exceed \$1,000,000 per line item, or a tax value over 999.99. Basically, the new database structure should assert enough capacity to not be exceeded in any event. Almost all amount fields will be defined as an unlimited numeric value instead of the traditional 7/2 or 99,999.99 which only allows 7 digits and 2 decimals. The data may be presented in a truncated form but will be stored in these new larger data fields to accommodate almost infinite growth and capacity.

**Web Query & Data Definitions.** Fully documented and self defined data definitions for Web Query and SQL data bases. The standard Web Queries will provide “ad-hoc” (user determines) selection of data as well as pre-defined inquiries that will show the data in an easy to use graphical display with the ability to ‘drill-down” (see what makes up the number) capabilities. These pre-defined definitions will allow for easier access to the underlying data without programmer customization of the FMS software. Additionally the data can be exported into an Excel or a PDF at the time of execution with no changes or programming. The IBM Web Query product requires no software on the PC and runs fully on the Power6 System through a web browser. So no “special” PC is needed with some difficult or mysterious configuration to get data from the FMS Software. Simply open your web browser and run the Web Query of your choice and export or print the report on your PC. See a sample web query below.

ORDERDATE_YEAR	Product Type	Order Count	Revenue
<u>2006</u>	Audio	6,498	\$190,920,684.00
	Camcorders	2,566	\$216,517,006.00
	Cameras	2,714	\$90,761,413.00
	Office	1,491	\$14,658,888.00

Sample IBM Web Query (note the underlined numbers allow “drill-down” ability)

**AlertQ System.** This is a system wide implementation of a new business logic tool. That monitors key areas and provides feedback to a central depository of issue and concerns. This Module was developed specifically for the Picking Module and has been designed to be implemented in all other modules to improve the usability and reporting of the system. AlertQ’s are for specific segments of the business and may be monitored by key employees in those areas to insure possible issues are addressed. For example, An order has been sent from your web site and there are bad or missing information on this order. An alert would be sent to the WebOrders AlertQ that would be monitored by a key CSR that would inform them of this issue. They would know to verify and correct the order so that it can be processed by the system.

## ***Order Entry***

***Improved Sales History.*** Revise the current invoice history structure to accommodate longer retention periods and create an easier access to sales data.

***Re-Runnable Dayclose Reports.*** Update and report logic will be separated from dayclose reports to create a set of transaction records that can re-generate on demand any dayclose report. Allow for suppression of dayclose reports and still have the ability to run a report at a later date. This will allow for more audit data to be available for auditors and Controllers to verify G/L and Sales data that has been posted to G/L. Reports that have not been printed or have been lost can easily be regenerated. The user controls the number of runs to retain the data up to 9999 runs or over 27 years of once daily runs. This option will require more Disk Space than previous releases of FMS.

***Daily Balance Sheet Inquiry.*** Provides the user with a daily one screen G/L to Sales balance display. This will assist with finding and monitoring for any issues regarding the G/L to Sales Interface and postings. This will also provide an executive overview of the daily transactions.

***Utilitran Interface.*** Interface to the Utilitran online ordering and acknowledgement system.

***School Commodity Interface.*** K12 and Processor-Link interfaces to automate the commodity bank allocation and payment process. Fully Automated K12 transactions, balance updates, product commodity definitions and content, commodity banks by RA (customer), daily customer transactions for reimbursement. Partial automation of Processor-link to handle daily transaction updates for customers. Both create a PTV to be deducted on the invoice by line item. Invoicing has logic to prevent a customer from over utilizing Commodity items or PTV.

***Picking Module.*** Scanner based application to pick orders by Control Number or Route. The Picking Module is tightly interfaced to the Order Entry System. Items are batched into groups of pickable items that a picker is guided to pick and confirm via a scanner. Multiple methods of picking are accommodated. This module also accommodates truck loading to insure the proper containers or pallets are loaded in the proper sequence on the correct truck. Optional labels are printed and attached to each unit for clear delivery. This label will uniquely identify the carton for the route/delivery module. Additionally, it will provide clear delivery instructions and assist with returns. The Picking Module is interfaced into the New AlertQ system that identifies key issues that may need attention. These alerts are intended to be monitored by management or key personnel to insure accurate and complete orders are sent to the customer. This provides for a double check of key issues that may need attention. Picker statistics as well as key unit statistics are gathered by the picking module. These statistics are key in determining pick unit cost calculations and productivity.

***Delivery Module.*** Scanner based Route Delivery module to assist in recording key delivery statistics and data. Accurate deliveries based on information passed from Picking Module. Record delivery times and compartment temperature as well as confirmation that all items were delivered. Assist the driver with locating items that may have been loaded late. Optionally, the Delivery module could accept returns and sell "off the truck" items.

***Web Order Entry.*** A standard web order entry interface and application that can be integrated via link onto your current web site. Utilize Order Guide pricing to generate custom price files for Web customers. Automatically update the web site directly from your Power6. Orders are imported and processed into your order entry system as the customer submits them. Email notification of new orders. Customer Order History online for customer to review. Full text searchable access to your complete line of products is available to your clients. This module has had tremendous success and is being constantly enhanced to accommodate new features.

---

## ***Inventory System***

***Lot Inventory/Locator System.*** Revisions to the current lot and location (slot) management system to more thoroughly integrate location and lot management into the system. Capture of manufacture Lot and Expiration dates at receiving. Product Safety and Recall reports and inquires to assist in the recovery of specific product and lot#'s. A scanner based Receiving and Replenishment program to move and track inventory locations. Suggested inventory movement based on the FIFO inventory model.

***Improved Inventory History.*** Longer inventory transaction retention. New inventory balance record type. Create a G/L type Balance forward inventory transactions to re-create and show inventory flow over a longer period of time. This will allow for a Web Query report with drill down capabilities to see detailed transactions for any given period.

***Enhanced Barcode Support.*** This is a system wide implementation to the proper modules of an integrated barcode/ Package Qty (U/M) conversion table. This table will be used to cross reference multiple barcodes to the same FMS Item #. Additionally, The U/M and Package Conversion Quantity will be attached to this Barcode Implementation. This implementation will follow the EAN-13 Implementation require for all retail UPC barcodes. Additionally, the UCC/EAN 128 standard for shipping containers will be used to capture data encoded by the manufacture at the time of receipt. This enhancement will allow the user to process most transactions with scanners and provide for more accurate inventory transactions as well as improving order accuracy rates. The Package Quantity (U/M) portion of this package will provide the system the ability to accommodate several pack sizes for an item. This is a change from the current system that allows for a selling unit and a broken unit (each) only. This also will allow for a more thorough implementation of Master Packs, Pallet and other bulk packages for Purchasing and Order Entry.

## ***G/L System***

***Improved History.*** Allow a longer retention period of G/L Details for better audit capabilities. Post more detailed data for certain transactions to more tightly integrate G/L to the supporting modules. These key details will allow for detailed audit reports to be created from the supporting modules to “regenerate” prior reports.

***Simplify Prior-Period Postings.*** Simplify and clarify the steps to post prior period batches to G/L. Mark prior G/L trial Balances as Not-Final when prior-period transactions Post. This will force new Trial balance reports for all periods subsequent to the Prior-Period posting transaction. As a rule, it is usually preferred to not post in prior periods unless absolutely required. In the event you must, all periods after the prior period adjustments that have been closed (finalized) must be regenerated.

***Improved Inquiries.*** Take advantage of the Web Query drill down feature to fully “see” the transaction(s) that created a G/L entry. This will vastly improve the ability to audit an account.

## *Purchasing System*

***Receiving Module.*** Scanner based PO receipts and lot management. This replaces the manual adjustment and posting of PO's and allows for inventory to be updated as soon as the truck is unloaded. The capturing of manufacture lot# and Expiration Dates is done in this application. This is the first component of the locator system that tracks all inventory movement within the building. This is also a key element in the recall system that tracks all in/out products by FMS lot #.

---

## ***Contract Pricing***

***Bid Automation.*** Designed for school bids and commercial bids where manufacture programs must be assembled to create a Contract price for a specific period. Contains logic for an escalation clause on the contract where an item price may increase/decrease based on manufacture increase/decreases. (Handle uncontrollable shipping costs) Allow for multiple bids with various expiration dates to create a single contract. Keep track of variable costs that may be charged for special bid price from manufacturers/brokers. Generate actual printed bids in customer defined order for submission to customers. Generate Manufacture request for special pricing reports. Generate escalation letters to be mailed/faxed/emailed. Generate Bill-Back/Rebate programs used for bid pricing. Directly interfaces to the Contract Pricing System.